


Projekt
Vådområdeprojekt ved Hindemæe

Bilag 5.2
Fremtidige afvandingsforhold
sommermedian (projektforslag 2)

Signaturforklaring


 Projektgrænse

 Vandløb

 Stationering


 Rørlagt vandløb


 Matrikel


 § 3 beskyttet sø


Afvandingsforhold


Vandspejl under terræn (sommermedian)


 Vand omkring terræn

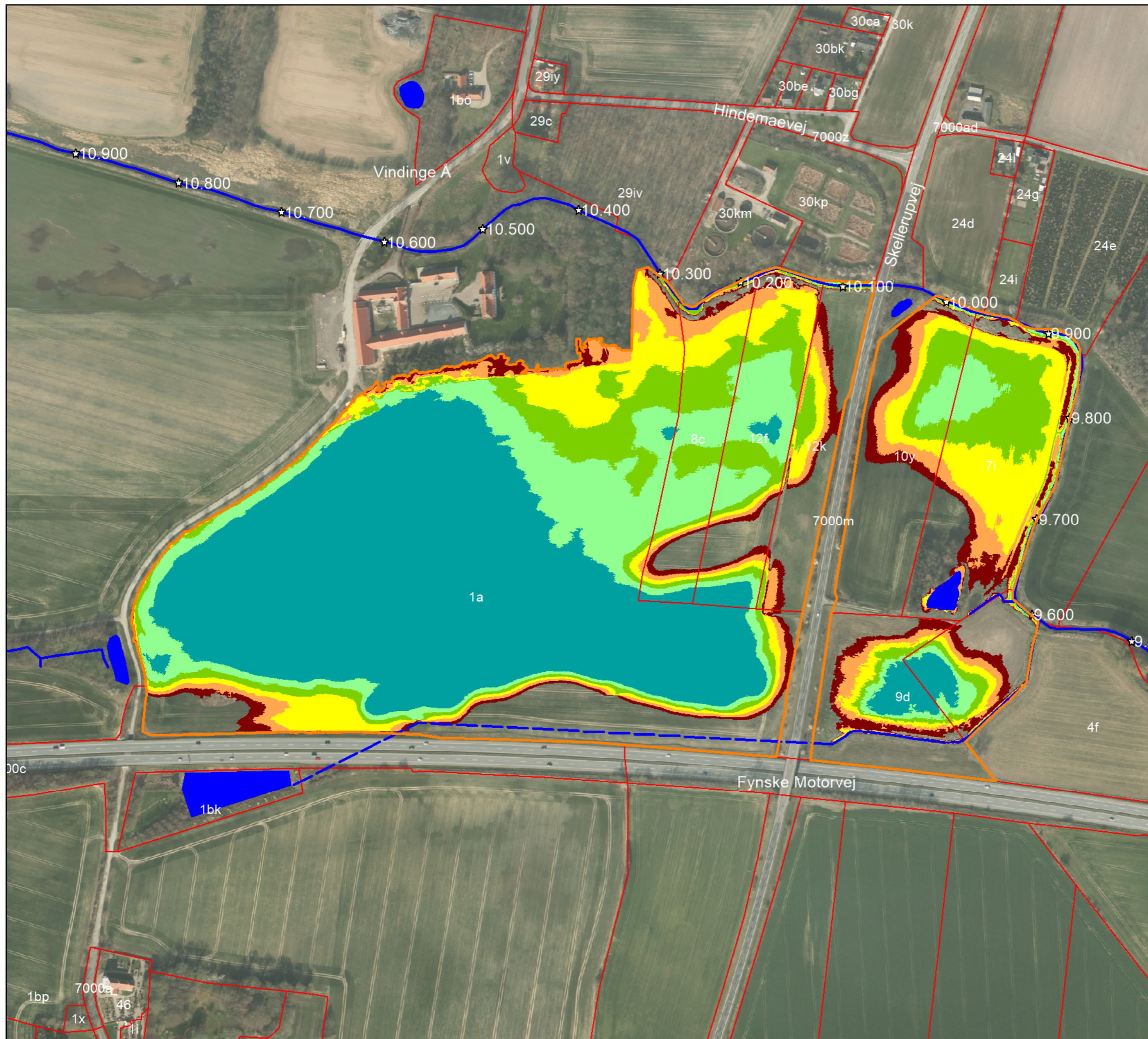
 Sump (0-25 cm)

 Våd eng (25-50 cm)

 Fugtig eng (50-75 cm)

 Tør eng (75-100 cm)

 Veldrænet eng (100-125 cm)



Mål: 1:3.500 (A3)
Dato: 07-01-2020
Udarbejdet: MC
Kontrol: LGB
© SDFE



Bangsgaard &
Paludan ApS